

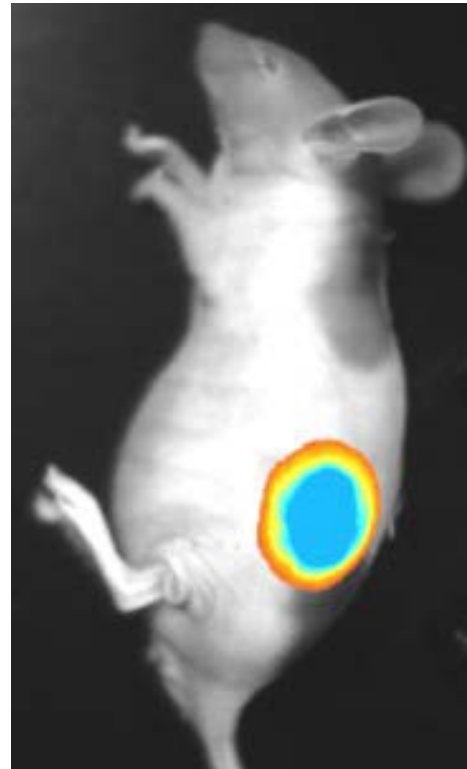
Subcutaneous detection of FITC beads

Methods

Five microliters (109 beads) of FITC containing micro-beads (200 nm of diameter; Molecular Probes) were diluted into 100 μ l PBS and injected subcutaneously in a nude mouse. The animal was immediately placed in the NightOWL LB 981 light-tight chamber and gray-scale body-surfaces images were taken (0.2 s exposure time, 1x1 binning resolution level). Afterwards, photons re-emitted from FITC were acquired during 10 ms using a 5x5 binning. The light pod was turned ON and an FITC filters set was installed in front of the light-arms and in front of the camera.

Results

FITC beads were detected after only 10 ms exposure under the skin of a nude mouse. Note that the same quantity of beads injected intraperitoneally was not detectable even after 5 min of exposure.



Courtesy :
Jean-Luc Coll and Marie C. Favrot,
INSERM EMI 9924, La Tronche, France