

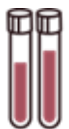
ACADEMIA

Genomics

USO INTERNO

- GenElute™ Mammalian Total RNA
- TRI Reagent®
- GenElute™ mRNA Miniprep
- GenElute™ FFPE RNA Purification
- Spectrum™ Plant Total RNA
- RNAlater®

RNA Purification



- GenElute™ Mammalian Genomic
- GenElute™ Blood/Plant /Bacterial
- GenElute™ FFPE DNA Purification
- GenElute™ Plasmid Miniprep
- Phenol-based Reagents
- SpinPrep™ Kits

DNA Purification



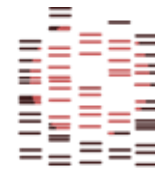
- Taq Polymerase
- KOD Polymerase
- JumpStart™ Taq Polymerase
- KOD HotStart Polymerase
- JumpStart™ REDTaq®™
- Deoxynucleotide Set
- Custom DNA Oligos
- Whole Genome Amplification
- Enhanced Avian HS RT-PCR
- One Step RT-PCR Master Mix

RT-PCR & Amplification



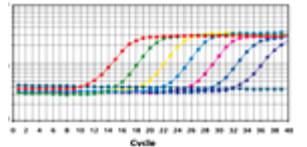
- Equipment & Accessories
- Acrylamide and Agarose
- Running Buffers
- Markers & Ladders
- Dyes & Stains
- Extract-N-Amp™

Genotyping & electrophoresis



- SYBR® Green based qPCR
- Probe-based qPCR
(LuminoCt or KiCqStart)
- SYBR Green RT-qPCR
- RT-qPCR ReadyMix
(JumpStart or KicqStart)

Quantitative PCR



Key:
 Legacy Merck
 Legacy Sigma-Aldrich
 Both

- Water Purification
- Filtration Discs & Hardware
- Solvents, Acids, Bases, Salts, Buffers, Detergents, Proteins, Antibiotics
- Labware Alliances



LAB ESSENTIALS

MERCK

ACADEMIA

Cell Analysis

- Balanced Salt Solutions
- Sterile filtration
- Classical and special media
- Sera
- Diverse cell lines
- Cell culture reagents
- Freezing medium
- Cell dissociation reagents

Cell Preparation



- Scepter
- Muse Cell Analyzer
- Muse kits

Count



- Plates, flasks, dishes
- Microfluids Platform *In vivo* Like
- 3D cell culture reagents
- Cellular growth factors
- Millicell ERS-2 Voltohmmeter
- Supplements

Grow



- Antibodies
- FC kits and reagents
- Imaging Flow Cytometry
- Benchtop EasyCyte Flow Cytometers
- Muse Cell Analyzer
- Microfluids Platform *In vivo* Like

Detection



- Water Purification
- Filtration Discs & Hardware
- Solvents, Acids, Bases, Salts, Buffers, Detergents, Proteins, Antibiotics
- Labware Alliances



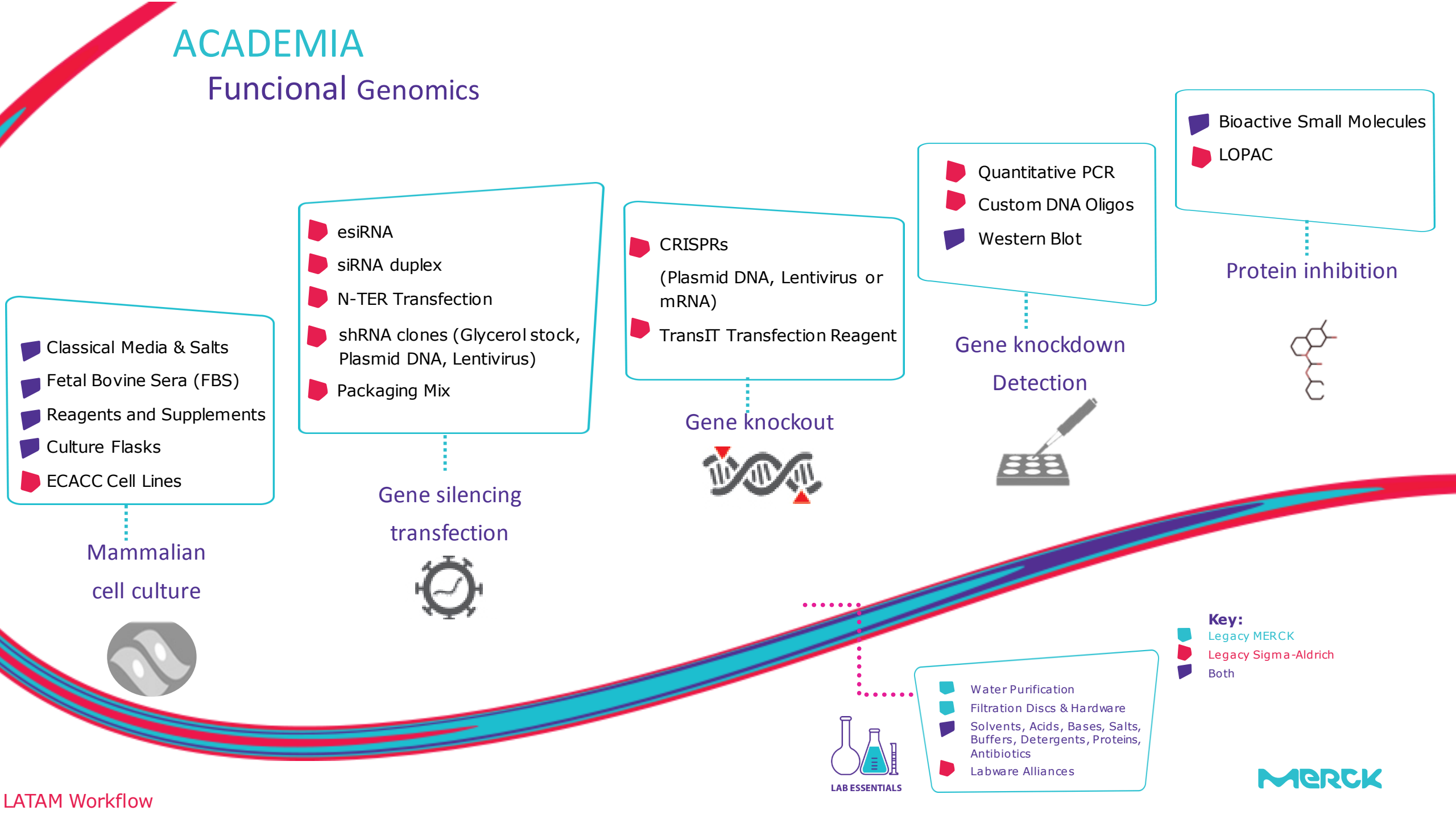
LAB ESSENTIALS

- Key:**
- Legacy Merck
 - Legacy Sigma-Aldrich
 - Both

MERCK

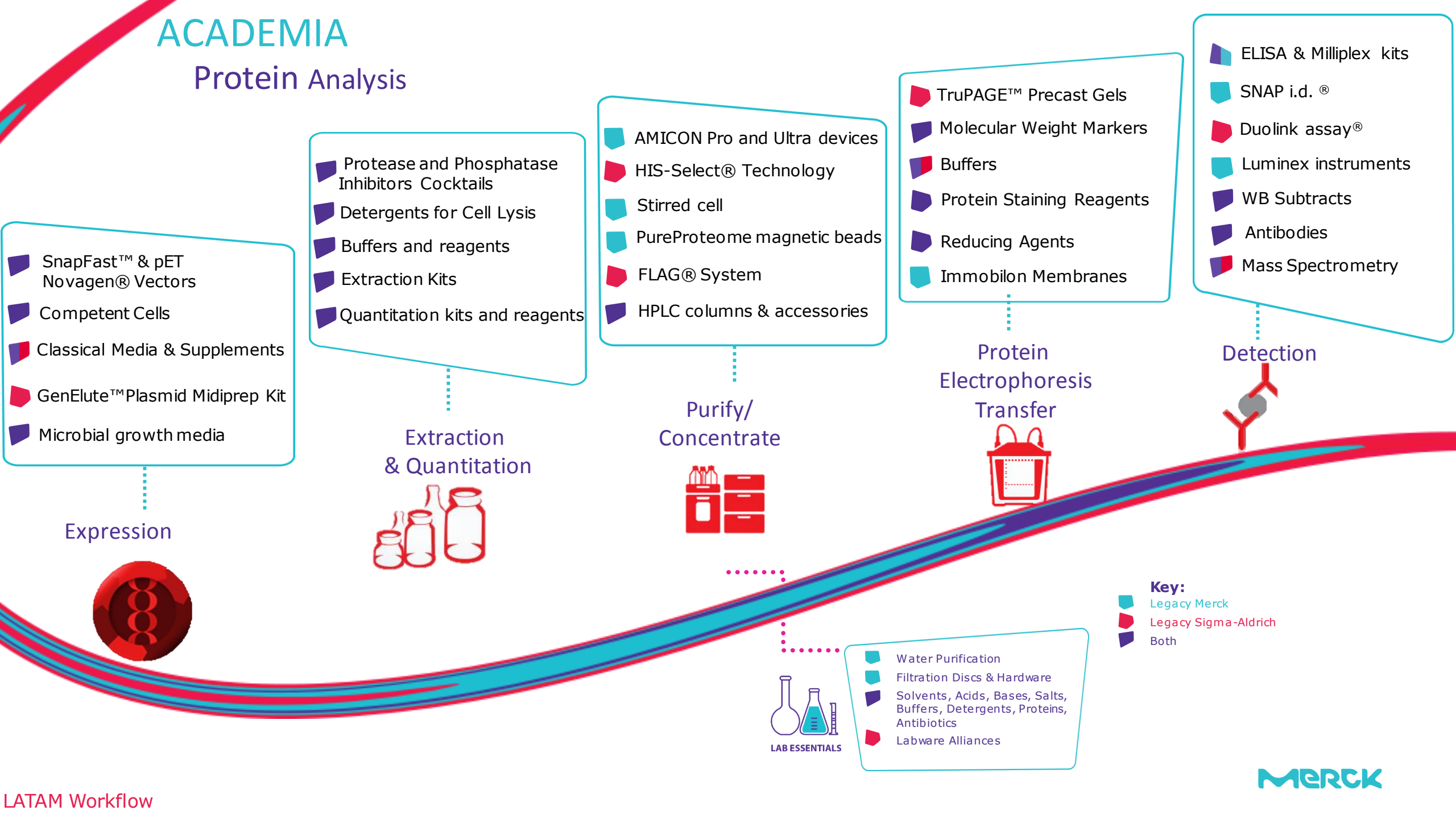
ACADEMIA

Funcional Genomics



ACADEMIA

Protein Analysis



Contract labs

Environmental Testing Workflow

Key:
Legacy Merck
Legacy Sigma-Aldrich
Both

Solid Phase Extraction (SPE) – Hardware, Cartridges and Quechers
Solid Phase Micro Extraction (SPME)

Air Monitoring (Solvent and Thermal desorption; bags and passive sampling)
PTFE Membrane for Particle Monitoring PM2.5



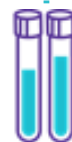
SAMPLE PREPARATION

TLC and HPTLC Plates (Glass, Aluminum and PET)
HPLC Columns (Porous Silica, Fused Core, UHPLC and Monolithic)
GC Columns (Capillary and Packed)
GC Accessories (Inlet, Septa, Ferrules and Gas management)
Vials, Caps and Inserts
Syringes (Hamilton and SGE)



INSTRUMENTAL

Solvents (HPLC, GC, UHPLC, MS and Pesticide Grades)
Derivatization Reagents (HPLC, GC and TLC)
Standards & CRMs (Pesticides, PCBs, PAH and VOC/SVOC)
Syringe filters & Hardware



SAMPLE ANALYSIS

Proficiency Testing (Water, Soil and Air)



PRECISION & ACCURACY



LAB ESSENTIALS

Solvents, Acids, Bases, Salts, Buffers and Detergents.
Labware (Electrophoresis, Liquid Handling and Corning)

Water Spectrophotometry and Colorimetric Kits

Reagents for wet and melting digestion
CRM for ICP/AAS (single and multi element)
Inorganic Proficiency Testing

Water Purification & Services

pH strip

APPLIED FOOD & BEVERAGE

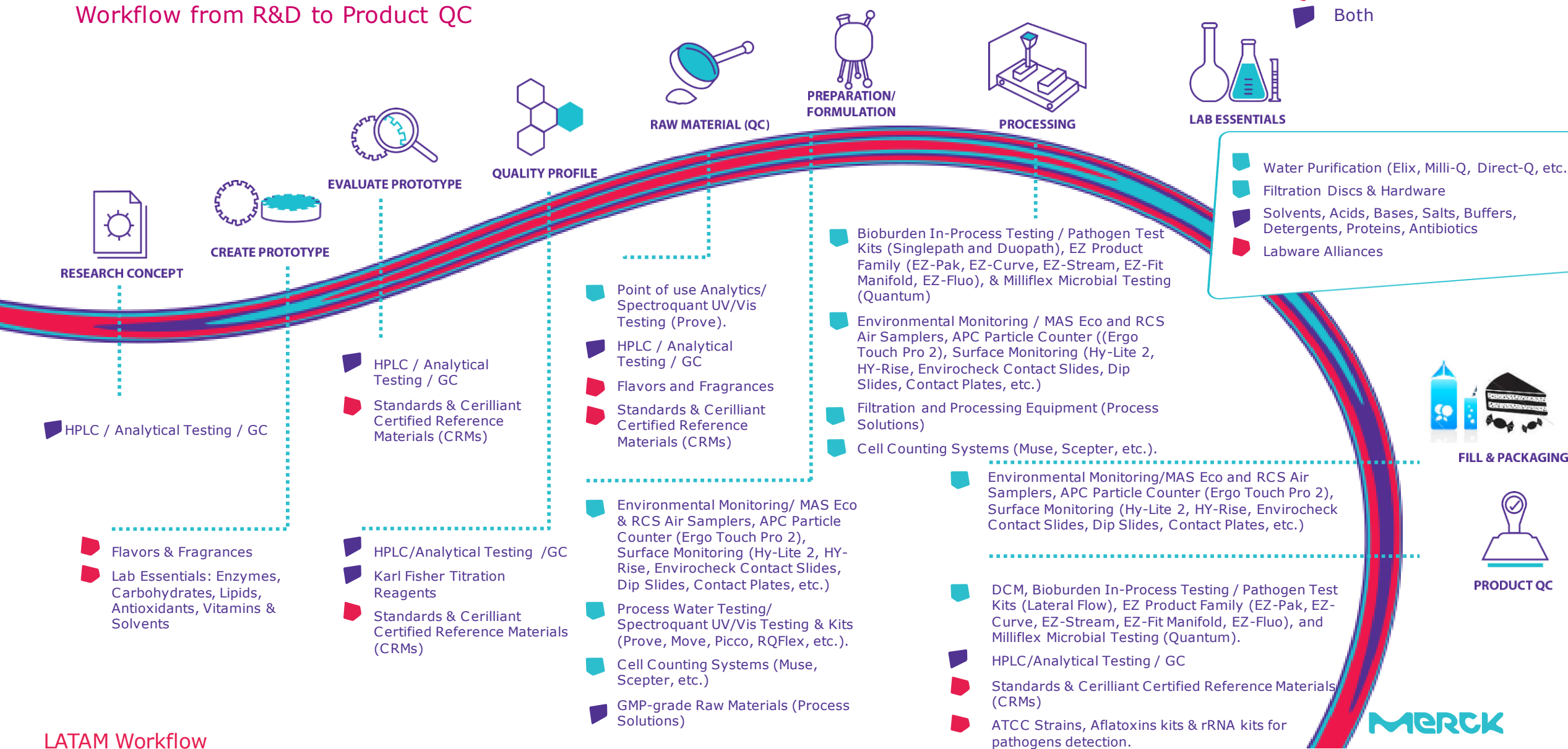
Workflow from R&D to Product QC

Key:

Legacy Merck Millipore

Legacy Sigma-Aldrich

Both

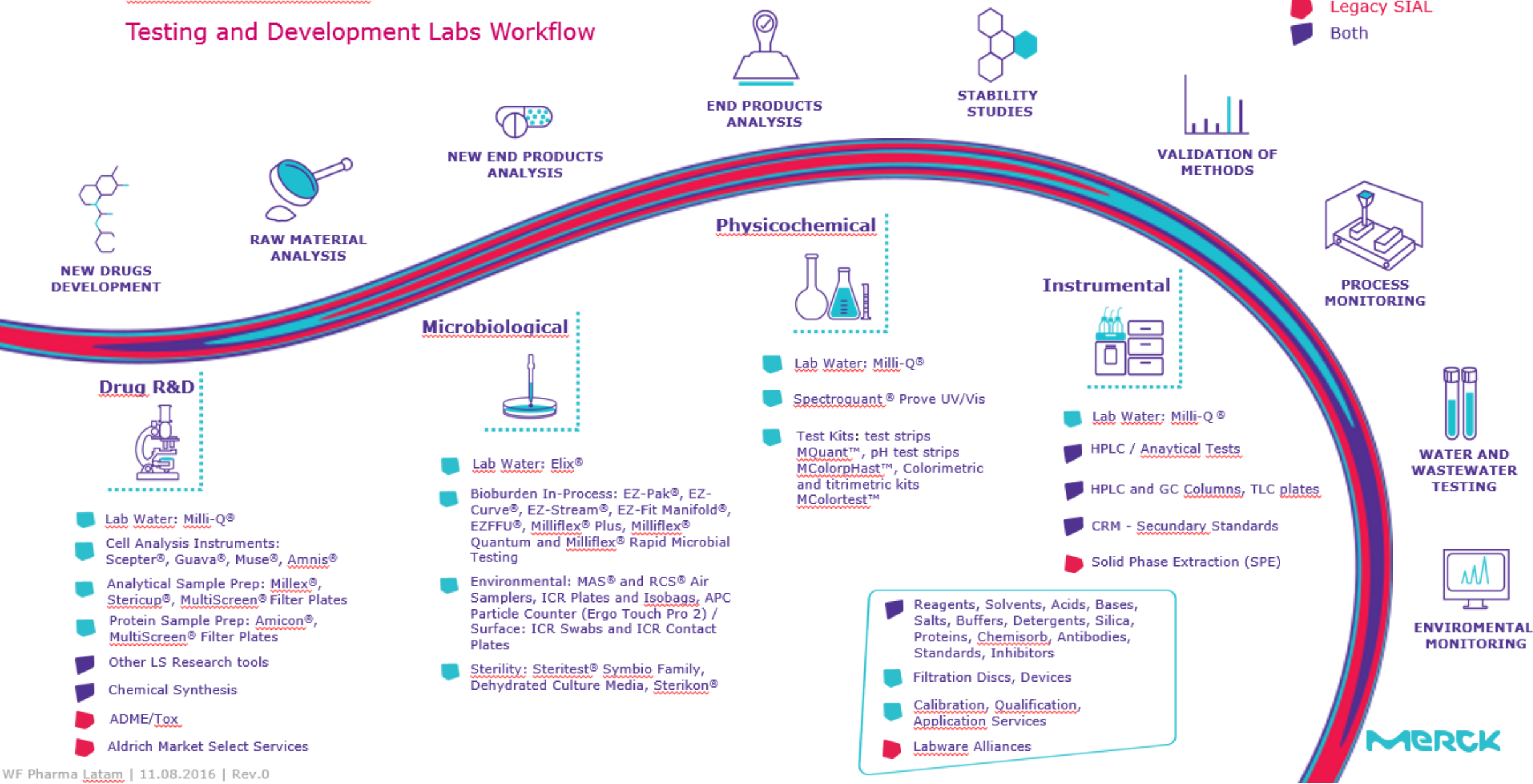


PHARMA

Testing and Development Labs Workflow

Key:

- Legacy Merck
- Legacy SIAL
- Both



MERCK